

Interactive Map of Canada's Changing Forests

By Pacific Forestry Centre, Canadian Forest Service, Natural Resources Canada

Scientists and satellites unlock changes in Canada's 348 million hectares of forests

Research scientists Mike Wulder and Joanne White compiled tens of thousands of satellite images obtained between 1984 and 2012 to produce the most detailed depiction of forest change at the national scale that has ever been generated for Canada. It's now possible to see forest disturbances

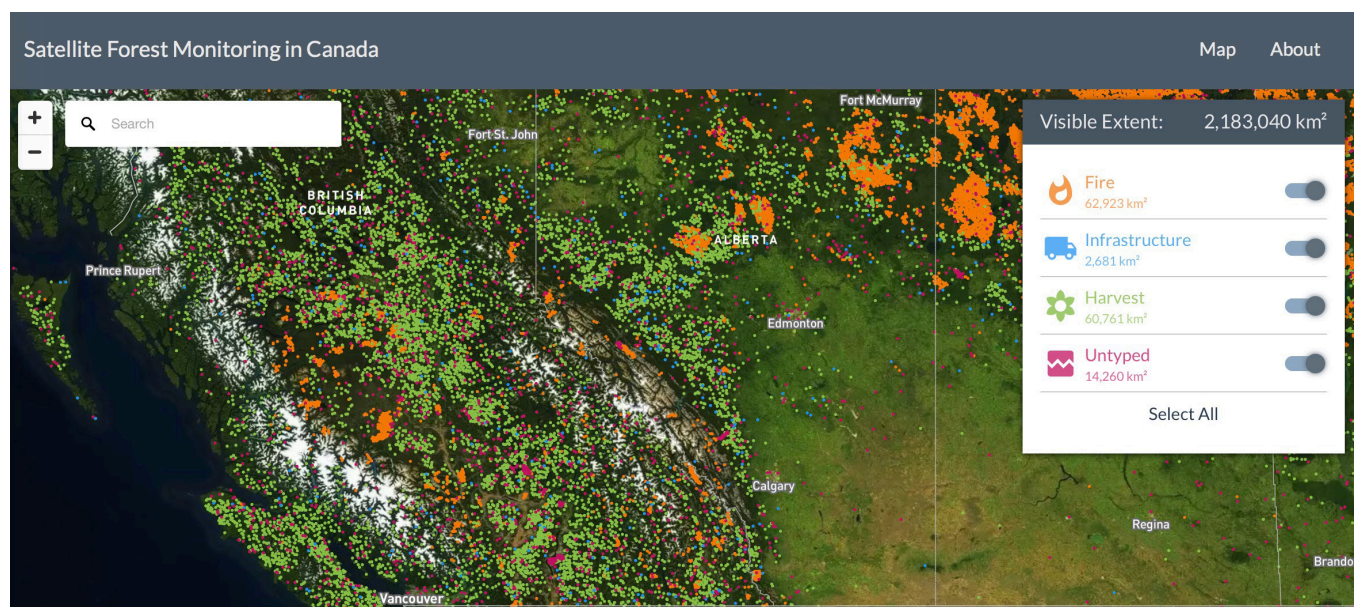
such as fire, harvesting and infrastructure across Canada even in the most isolated and remote areas.

In addition to capturing the changes, the information allows researchers to measure how quickly Canada's forests are recovering after these disturbances.

Visitors to the interactive site can select different map views by turning layers on and off with the click of a mouse. How much of Canada's forest has been burned by wildfire? Where is logging occurring? Nation-wide information is just a mouse click away.



Mike Wulder and Joanne White



Satellite Forest Monitoring in Canada - forests.foundryspatial.com

Wulder and White worked with a BC company to develop the data into interactive maps posted online so the public can freely access the information, both were honoured by the Canadian Journal of Remote Sensing for their paper “The Landsat observation record of Canada: 1972 to 2012.” Dr. Wulder is a member of the 2012–2017 Landsat Science Team and is frequently consulted by NASA.

See “Satellite Forest Monitoring in Canada” at forests.foundryspatial.com.

Links and Project Information:

Tracking forest change and recovery in Canada

<http://www.nrcan.gc.ca/forests/fire-insects-disturbances/tracking-change/17825>

High Resolution Satellite Forest Monitoring in Canada: A Pilot Website

https://www.researchgate.net/publication/303961063_HIGH_RESOLUTION_SATELLITE_FOREST_MONITORING_IN_CANADA_A_PILOT_WEBSITE



Follow Mike Wulder on Twitter: [@mikewulder](https://twitter.com/mikewulder)

For more details on research activities

https://www.researchgate.net/profile/Michael_Wulder

https://www.researchgate.net/profile/Joanne_White2



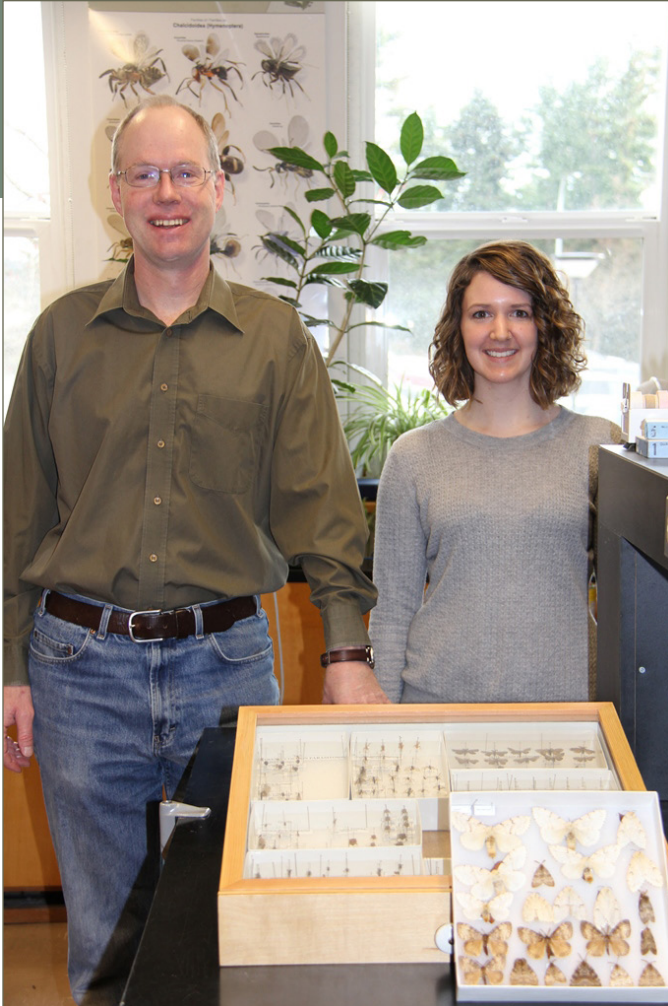
Video Link: <https://www.youtube.com/watch?v=V9ycU6ylzWY&feature=youtu.be>



Natural Resources
Canada

Ressources naturelles
Canada

Canada



Brian Van Hezewijk and Kaitlyn Schurmann in the Pacific Forestry Centre's Defoliator Ecology Lab

Links

Natural Resources Canada

Forest Invasive Alien Species <https://www.exoticpests.gc.ca/home>

Pacific Forestry Centre <http://www.nrcan.gc.ca/forests/research-centres/pfc/13489>

Canadian Food Inspection Agency

Asian Gypsy Moth <http://www.inspection.gc.ca/plants/plant-pests-invasive-species/insects/gypsy-moth/asian-gypsy-moth/eng/1330353359964/1330353499535>